

# Monitoring Fault Diagnosis Based on Phasor Measurement Unit at Wide Area Systems

*by* Azriyenni Zakri

---

**Submission date:** 30-Jul-2019 04:29PM (UTC+0700)

**Submission ID:** 1156193338

**File name:** CENCON\_2019\_YOGYA\_AZ\_edit.docx (412.97K)

**Word count:** 2682

**Character count:** 13560

# Monitoring Fault Diagnosis Based on Phasor Measurement Unit at Wide Area Systems

Ariyanti Nabah Zakri  
Dept. of Electrical Engineering,  
Faculty of Engineering  
Universitas Riau  
Pekanbaru, Indonesia  
ariyanti@eng.unri.ac.id  
(IEEE Member 92012627)

Mohd Wasir Mustafa  
School of Electrical Engineering,  
Faculty of Engineering  
Universiti Teknologi Malaysia  
Johor Bahru, Malaysia  
wasir@utm.my

Herman Syahri  
Dept. of Electrical Engineering,  
Faculty of Engineering  
Universitas Riau  
Pekanbaru, Indonesia  
herman.syahri2@gmail.com

**Abstract**— Increasing the fault diagnosis of the electric power transmission system to consumers is very sensitive to power outages. Several methods are to be able to determine the fault location in the electric power transmission line. The purpose of measuring for wide-area relating to monitoring state of the system in a wide area is called the Phasor Measurement Unit (PMU). This measurement system will be performed by monitoring, control, and protection by combining the function of the phasor measurement device. PMU is a part of measuring the phasor of current and voltage values to the control center. So, this study was intended to design 9-bus systems IEEE based PMU using the software. The simulation is performed in a state of three-phase short circuit faults. Then, the simulation is tested on all lines on the 9-bus systems IEEE with variations distances of 10%, 20%, 30%, 70%, and 90%. The simulation results are used as input for the fault diagnosis to determine the point of fault location on the 9-bus systems IEEE. Furthermore, it can calculate the error value, RMSE, and MAE of the three-phase short circuit fault diagnosis on each line of the 9-bus systems IEEE. The highest error value obtained on Bus-7 to Bus-8 of fault location distance of 90% is 8.48 %, RMSE is  $3.02 \cdot 10^3$ , and MAE is  $2.45 \cdot 10^3$ . Meanwhile, the smallest error value on Bus-6 to Bus-4 of a fault location distance of 10% is  $6.3 \cdot 10^{-7}$  %, RMSE is  $3 \cdot 10^7$ , and MAE is  $2.6 \cdot 10^7$ .

**Keywords**— fault diagnosis, short circuit, PMU, wide area

## 1. INTRODUCTION

The transmission system is a major part of the distribution of electrical energy, without a transmission line, the distribution of electrical energy will not work well. A fault in the transmission line can cause a break in the supply of electrical energy to the load, resulting in losses for consumers. For this reason, an increase in the fault diagnosis in the transmission line is needed for the distribution of electricity to consumers. Therefore, a measurement method for a large area is related to monitoring the system in a large geographical area.

A wide-area measurement system is needed, including monitoring, controlling, and protection to combine the functions of the phasor measurement device. The Measurement Phasor Unit (PMU) is a technology in electric power systems that has synchronous measurement devices that are synchronously updated and are real-time. PMU is also part of measuring the phasor value, which gives phasor values of current and voltage to the control center [1]. R. A. Reyes and J. L. Guardado have conducted their research the PMU modeling using software for monitoring the system under normal and fault condition circumstances. Observation is carried out on the state of the power system accurately.

20

The output of PMU is in the form phasors of current and voltage. This simulation of PMU modeling provides the system as continuous [1]. B. Malkarjuna et al. have optimized the placement of PMU on electric power systems in India. The phasor value measurement system uses PMU to improve efficiency, reliability, and monitoring. Their using Simulated Annealing (SA) optimize the placement of PMU requires 25% of the total number of buses in the electricity system [2]. Furthermore, Mohammed Mahdi, V. M has proposed the prediction of the stability of the power system using data of PMU output. System observation is carried out before the fault occurs, and the situation after a fault occurs and collect voltage data as input for predicting system stability. The stability of the electric power system is stated to be safe or unsafe. The condition before the fault and after a fault occurs using the intelligent technique that is Artificial Neural Networks (ANN) to predict the stability of the system [3]. Based on the literature review conducted by other researchers related to PMU, the researchers will propose optimizing the application of PMU on the system 9 bus IEEE to predict the stability of the electric power system. Modeling of this electrical power system is run using Matlab-Simulink. Then, every placement of PMU on the channel will be analyzed in determining the location of the short circuit fault. There are three main functions in measuring a wide area. This is data acquisition, data transmission, and data processing. This operation is managed by the measurement system, communication system, and energy management of each system [4].



Fig. 1. The architecture of wide-area measurement based on PMU [4]

Wide area measurement based on PMU is defined as a system that performs computations on the electricity network with a high degree of accuracy, for a larger range of areas, and better than a conventional monitoring measurement system. The measurement results are used to increase the stability of the system under conditions of normal and

disturbance. The important thing about measuring for a wide area is using synchronized measurements, high sampling rates [5]. Monitoring system did real-time, fastly, and accurately throughout the system are essential in the development of the current power system, PMU can be used in the electricity network to meet these challenges [6].

## II. THE MEASUREMENT BASED-ON PMU

### A. PMU

PMU is a technology that makes electric power systems have phasor measurement equipment that can be updated continually [7]. PMU can measure phasor of current and voltage on the bus installed by the PMU. The result of a measurement is given continuously to PMU as the equipment needed in the electrical system [1].



Fig. 2. Diagram of PMU

Figure 2 is a PMU consisting of microprocessor-based devices that use the ability of a digital signal processor to measure 50/60Hz AC voltage and current waves at a rate of 1 samples per-cycle (2400/2880 samples per second). Analog AC waves are sampled randomly by A/D converter for each phase. To provide synchronous time to all systems, the satellites from GPS are used as inputs to lock on the oscillator, and waves from 1 systems are sampled with one-microsecond accuracy. PMU uses a digital signal processing technique to calculate phasors of voltage and current each bus [8].

### B. Fault Location Based on PMU

The fault diagnosis uses PMU output by calculating simple resistance, the impedance is taken by reference to one terminal to comparing the measured line impedance ( $Z_{ik}$ ), and the impedance calculated when a fault occurs ( $V_k / I_k$ ), to determine the fault location. An assumption that the fault resistance value is zero. The calculation got accurately and, this resistance depends on the angle is equal to 180. Generated location of the fault [9]. For each type of fault, the problem can be solved by equation (1) [10].

$$V_k = m \cdot Z_{ik} \cdot I_k + R_f \cdot I_f \quad (1)$$

$$k \left[ \frac{Z_c - Z_k}{Z_c} \right] \quad (2)$$

To minimize the effect of the equation with  $I_k$  ( $I$  measured on the location of the fault) and reduce the equation ( $R_f \cdot I_f$ ), To do this, use imaginary parts and solve them with these equations [9].

TABLE I. THE IMPEDANCE VALUE OF EACH TYPE OF SHORT CIRCUIT FAULT

Type of Fault	The impedance of Positive Sequence ( $mZ_{ik}$ )
A-G	$Z_{ik}/3 + j0I_k$
B-G	$Z_{ik}/3 + j0I_k$
C-G	$Z_{ik}/3 + j0I_k$
A-B & A-C-G	$Z_{ik}/2 + j0I_k$
B-C & B-A-G	$Z_{ik}/2 + j0I_k$
C-A & C-B-G	$Z_{ik}/2 + j0I_k$
A-B-C	$Z_{ik}/3 + j0I_k$ or $Z_{ik}/3 + j0I_k$

$$\text{Im} \left( \frac{V_k}{I_k} \right) = \text{Im} (m \cdot Z_{ik}) = m \cdot X_{ik} \quad (3)$$

$$m = \frac{\text{Im} \left( \frac{V_k}{I_k} \right)}{X_{ik}} \quad (4)$$

This study has built IEEE 9-bus system modeling using PMU. In this model, a wide area measurement method is applied PMU by running a three-phase short circuit simulation at the fault distance point of 10%, 30%, 50%, 70%, and 90%.

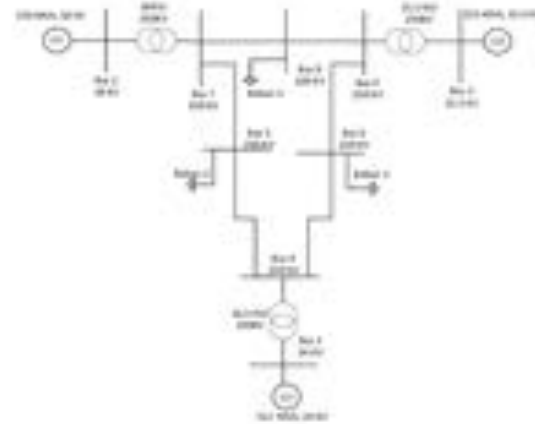


Fig. 3. Single line diagram of the IEEE 9-bus system

Figure 3 is a line diagram with the IEEE 9-bus system that is used to be modeled using Matlab Simulink. Data obtained of three-phase short circuit simulations will be used as input for fault diagnosis to determine the fault location in the transmission system. The electrical power system used in this study is a diagram of the IEEE 230 kV 9-bus system, where the system consists of three generators, three transformers, six transmission lines, and three loads.

Figure 4 shows the model of PMU is an integrated part of monitoring, protection, and control systems, and it can be applied to a wide area system. PMU synchronizes the voltage, current measurement also can be easily controlled of the types of fault in the electric power system while being monitored to protect the power system from power outages [11].

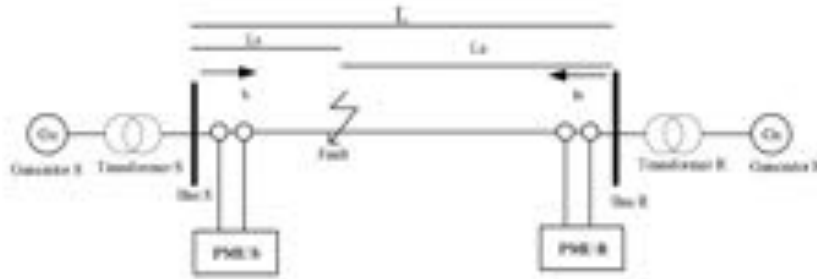


Fig. 4. Modeling of PMU for fault diagnosis

C. RMSE & MAE

Root Mean Square Error (RMSE) and Mean Absolute Error (MAE) are used for evaluation studies of a model built. RMSE is the rule of a quadratic scaling to measure the magnitude of the average error, where the difference in the average square root of the actual value to the predicted value. While MAE measured the magnitude of the error for model predictions. The sample test is the average of the absolute difference in the actual value and predictive value, where the difference in each data has the same weight. The RMSE and MAE equations of the amount of data can be seen in equation (5) and (6) [12].

$$RMSE = \sqrt{\frac{1}{n} \sum_{i=1}^n (y_i - \hat{y}_i)^2} \quad (6)$$

$$MAE = \frac{1}{n} \sum_{i=1}^n |y_i - \hat{y}_i| \quad (7)$$

Where:

- $y_i$  = value of actual target
- $\hat{y}_i$  = value of predictive output
- $n$  = amount of data

17 RESULT & DISCUSSION

The results of three-phase of short circuit fault simulation obtained in the line for the IEEE 9-bus system, with a distance at the point of the fault of 10%, 30%, 50%, 70%, and 90%. Figure 5 is the result of this simulation, will be used as input in the fault diagnosis to determine the location of the three-phase short circuit fault for each transmission line. After a fault diagnosis is carried out, and then calculate the percent error, that is, RMSE and MAE of the three-phase short circuit fault diagnosis on each line on IEEE 9-bus system at a distance variation determined. When a three-phase short circuit occurs, the PMU is installed on each bus to provide monitoring results of the current phase and voltage phase values.

In Figure 6, it uses PMU which is installed on each bus to monitor the current signal in a positive sequence when there is a three-phase of short circuit fault from bus-7 to bus-8 with a fault distance of 10% (from bus-7). From the positive sequence, the current signal can be observed an increase in

7 the value of the magnitude of the positive sequence current in the event of a three-phase short circuit fault.

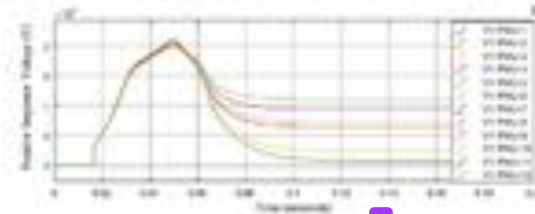


Fig. 5. The voltage of positive sequence when three-phase of a short circuit fault

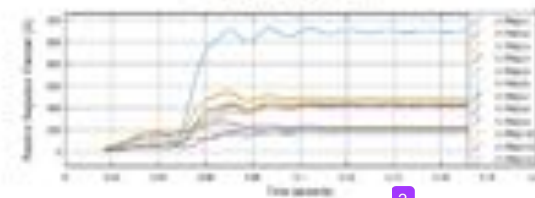


Fig. 6. Current of positive sequence signal when three-phase short circuit fault

TABLE 2. FAULT DIAGNOSIS AT LOCATION DISTANCE OF 10% FROM BUS-7 TO BUS-8 BASED ON PMU

PMU	Fault Diagnosis (Km)	Fault Diagnosis Via Software (Km)	Line Length (Km)	Line	The Error Percentage ± (%)
PMU 1	7.62	76.46	76.176	bus-7 to 8	0.37
PMU 2	68.63				
PMU 3	66.95	241.84	100.640	bus-8 to 9	126.77
PMU 4	175.79				
PMU 5	19.82	212.35	170.338	bus-7 to 5	24.66
PMU 6	193.13				
PMU 7	98.115	3011.39	179.86	bus-9 to 6	413.44
PMU 8	650.26				
PMU 9	179.51	414.44	89.55	bus-5 to 4	300.94
PMU 10	215.43				
PMU 11	426.49	976.14	97.336	bus-6 to 4	562.65

Table 2 is showing the measurement results of all PMUs on bus-7 channel to bus-8 used as input in performing a fault diagnosis in the electric power transmission system to determine the location of the faulty line on the IEEE 9-bus

system. The diagnosis fault of three-phase short circuit on the line bus-7 to bus-8 varies in distance from 10%, 30%, 50%, 70%, and 90%.

Table 3 shows that the results of the RMSE and MAE values for each channel on the IEEE 9-bus system will result in an error not exceeding 0.1, this means that the tolerance level from the results of running this model is still in an ideal state. The values of RMSE and MAE obtained a diagnosis of three-phase short circuit disorders in determining the location of the fault with a large area measurement method.

TABLE III RMSE AND MAE ON EACH LINE ON THE IEEE 9-BUS

Line	RMSE	MAE
bus-5 to bus-6	0.002350	0.001604
bus-6 to bus-4	0.002293	0.002209
bus-7 to bus-5	0.004154	0.003360
bus-8 to bus-6	0.004484	0.003116
bus-8 to bus-9	0.002184	0.001904
bus-7 to bus-8	0.002411	0.002308

In Figure 7, a graph has displayed the percent of three-phase of short circuit fault diagnosis errors for measuring large areas using PMU to determine the location of a fault. Three phases short circuit fault is simulated on all-electric power transmission lines in the IEEE 9-bus system with variations in distances of 10%, 30%, 50%, 70%, and 90%.

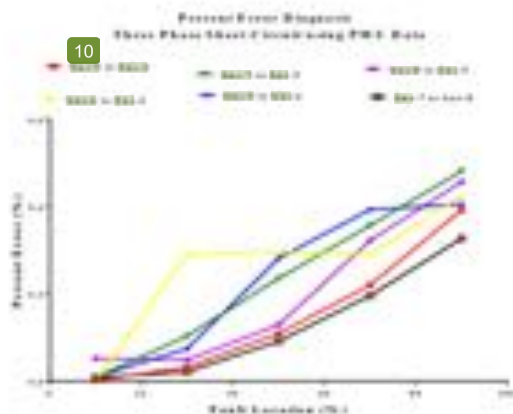


Fig. 7. The percent calculation of the fault diagnosis

Figure 8 displayed a graph of the error comparison between RMSE and MAE in each transmission line on the IEEE 9-bus system. The simulation results are run on three-phase short circuit fault using PMU. The error value obtained between RMSE and MAE is not much significant, but still within the range of tolerance errors set, and included in the category of minimal error values, meaning that the model that has been developed for this system is excellent.

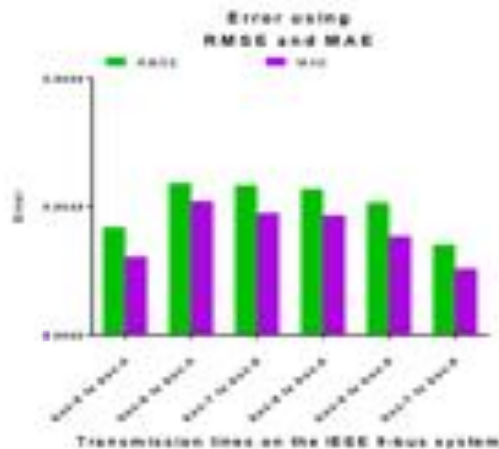


Fig. 8. Chart of RMSE dan MAE

#### IV. CONCLUSION

Based on the simulation results of three-phase short circuit interference with a wide area measurement method using PMU, a diagnosis of the disturbance was performed in determining the fault location in the transmission line on the IEEE 9-bus system. Designing a measurement method for a large area using PMU can display the current value and voltage phasor on each bus used as a system monitoring. In the event of a PMU current fault and the PMU voltage installed on each bus will read the current value and voltage or values on each bus. After simulation on each channel on the IEEE 9-bus system with variations in the distance of 10%, 30%, 50%, 70%, and 90%. Then the most significant error is obtained on the bus-9 to bus-6 with the fault location distance of 90% of bus-9, which is equal to 0.72%, RMSE:  $4.48 \times 10^{-3}$ , and MAE:  $3.5 \times 10^{-3}$ . The smallest error on the bus-6 to bus-4 with a 10% fault location distance from bus-8 is  $4.03 \times 10^{-3}$  %, RMSE:  $2.98 \times 10^{-3}$ , and MAE:  $2.6 \times 10^{-3}$ .

#### ACKNOWLEDGMENT

The author would like to thank the Ministry of Research, Technology, and Higher Education (RISTEKDIKTI), Republic of Indonesia.

#### REFERENCES

- [1] Rihan, M., M. Ahmad, and M.S. Beg, *Feasibility Analysis of Wide Area Measurement System in The Smart Grid* 2013, p. 1-7.
- [2] Mukherjee, B., M.H. Fozily, and D.K. Mohanta, *A Case Study on Optimal Phasor Measurement Unit Placement for Emerging Indian National Smart Grid* 2016, IEEE.
- [3] Muhammad Mahdi, V.M. *Artificial Neural Network Based Algorithm for Early Prediction of Transient Stability Using Wide Area Measurements* 2017, IEEE.
- [4] Qin, M., et al., *Balance of Security Strength and Energy for a PMU Monitoring System in Smart Grid* 2002, p. 342-349.
- [5] Bobba, B.R.S., et al., *Enhancing Grid Measurements* 2010, p. 67-73.
- [6] Shrivastava, M. and M.H. Iqbal, *Wide Area Measurement System Advanced Topics in Measurements*, 2012, p. 304-321.

- [7] Debackhara, A.S. *Transmission Grid Fault Diagnosis by Wide Area Measurement System*. 2013. IEEE.
- [8] CERTS, E. *Phasor Technology and Real-Time Dynamics Monitoring System (RTDS) Frequently Asked Question (FAQ)*. 2006. Theoretic Power Group and CERTS.
- [9] Zimmerman, K. and D. Costello. *Impedance Based Fault Location Experience*. IEEE Journal of Reliable Power, 2005, 4(1): p. 1-27.
- [10] Yin, H. *PMU Data Based Fault Location Techniques*. 2000. IEEE.
- [11] Wayne, A., et al. *Modeling and Simulation of Phasor Measurement Unit (PMU) for Early Fault Detection in Interconnected Two Area Network*. In *1st International Conference on Power, Energy and Smart Grid (ICPEES)*. 2018.
- [12] Chai, T. and R.R. Duvich, *Road Mean Square Error (RMSE) or Mean Absolute Error (MAE) Arguments Against Avoiding RMSE in The Literature: Geoscientific Model Development*, 2014, 7(3): p. 1267-1270.

# Monitoring Fault Diagnosis Based on Phasor Measurement Unit at Wide Area Systems

## ORIGINALITY REPORT

15%

SIMILARITY INDEX

3%

INTERNET SOURCES

7%

PUBLICATIONS

14%

STUDENT PAPERS

## PRIMARY SOURCES

1	<a href="http://cdn.intechopen.com">cdn.intechopen.com</a> Internet Source	2%
2	Submitted to Bitlis Eren Ã niversitesi Student Paper	1%
3	Submitted to University of Cape Town Student Paper	1%
4	Submitted to University of Strathclyde Student Paper	1%
5	Submitted to University Tun Hussein Onn Malaysia Student Paper	1%
6	Submitted to University of Greenwich Student Paper	1%
7	Submitted to Victoria University Student Paper	1%
8	Submitted to Indian Institute of Technology, Kharagpure Student Paper	1%

9	joiv.org Internet Source	1%
10	Submitted to University of Bath Student Paper	1%
11	Y.F. Lin, Z. Xu, Y. Huang. "Power oscillation damping controller design for TCSC based on the test signal method", IEEE Power Engineering Society General Meeting, 2005, 2005 Publication	1%
12	Submitted to University of Northumbria at Newcastle Student Paper	1%
13	Submitted to University of Glasgow Student Paper	<1%
14	www.inderscience.com Internet Source	<1%
15	Submitted to Jawaharlal Nehru Technological University Anantapur Student Paper	<1%
16	Asad Waqar, Zeeshan Khurshid, Jehanzeb Ahmad, Muhammad Aamir, Muneeb Yaqoob, Imtiaz Alam. "Modeling and simulation of phasor measurement unit (PMU) for early fault detection in interconnected two-area network", 2018 1st International Conference on Power,	<1%



# Energy and Smart Grid (ICPESG), 2018

Publication

17

Submitted to Stefan cel Mare University of Suceava

Student Paper

<1%

18

Ramirez, J.M.. "An investigation about the impact of the optimal reactive power dispatch solved by DE", International Journal of Electrical Power and Energy Systems, 201102

Publication

<1%

19

Submitted to The University of Manchester

Student Paper

<1%

20

Submitted to RK University

Student Paper

<1%

21

Xianzhong Dai, Jun Liu, Yong Tang, Naihu Li, Heng Chen. "Neural network  $\alpha$ -th-order inverse control of thyristor controlled series compensator", Electric Power Systems Research, 1998

Publication

<1%

22

Submitted to Coventry University

Student Paper

<1%

23

Submitted to Ohio University

Student Paper

<1%

24

Moustafa Chenine, Kun Zhu, Lars Nordstrom.

<1%

"Survey on priorities and communication requirements for PMU-based applications in the Nordic Region", 2009 IEEE Bucharest PowerTech, 2009

Publication

25

Wenchuan Wu. "PMU based voltage stability analysis for transmission corridors", 2008 Third International Conference on Electric Utility Deregulation and Restructuring and Power Technologies, 04/2008

Publication

<1%

26

Submitted to University of Queensland

Student Paper

<1%

27

Submitted to University College London

Student Paper

<1%

Exclude quotes Off

Exclude matches Off

Exclude bibliography On